

VIMPEX

Hydraulic Hole Punchers & Rod Cutters



Rebar

Industrial Hole Punchers

Li-Ion Battery Technology

Construction

Threaded Rod Cutters

N Series

Portable Tools

Farbrication

Double Acting

Why Ogura Hole Punchers?

Ogura Hydraulic Hole Punchers dramatically reduce your hole-making costs over conventional drilling methods.

Time Savings - Ogura Puncher users have documented increases in productivity over other hole making methods. One user stated that he had achieved a 75% time saving over the old method of using twist drills.

Fast Cycle Times - Punch clean and accurate holes in as little as 1.5 seconds. A single trigger actuates the punch while an exclusive auto-return mechanism returns the punch to its starting position.

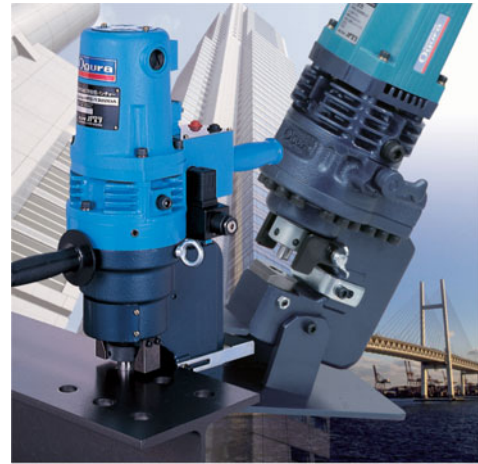
Ease of Handling - Single body, lightweight construction make these units easy to handle and move and no separate hydraulics. Operator fatigue is reduced since the Ogura puncher does all the hard work.

Accuracy - Ogura punchers eliminate the need to pre-drill or pre-punch. To confirm the punch position, simply jog the punch down to the centre mark for the hole location. A convenient release valve allows ease of repositioning if required.

Less Clean Up - With Ogura punchers there is no messy drill debris. You get a clean slug that is easy to handle, with faster clean-ups.

Punches Last Longer - Twist drills can break easily and dull quickly. When properly cared for, an Ogura punch and die set can produce an average of over 1000 holes.

Most products are available ex-stock with all spare parts and service spares available immediately.



Hole Puncher Specification Overview

Model	Page	Motor Wattage	Weight (Kg)	Dimensions LxWxH (mm)	Max. Throat Depth (mm)	Hole Shapes	Punching Capacity	
							Mild Steel	Stainless
HPC-156WDF	3	18V Battery	7.9	390 x 115 x 293	25	Round/Oblong	ø15 x t6	ø15 x t6
HPC-N186W	4	710W	11.3	492 x 127 x 335	60	Round/Oblong	ø18 x t6	ø14 x t5
HPC-N208W	5	710W	10.3	487 x 127 x 315	40	Round/Oblong	ø20 x t8	ø20 x t6
HPC-N208WDF	5	18V Battery	10.7	417 x 127 x 315	40	Round/Oblong	ø20 x t8	ø20 x t6
HPC-N209W	6	1050W	11.3	529 x 127 x 315	40	Round/Oblong	ø20 x t9	ø20 x t6
HPC-N209WDF	6	18V Battery	11.3	430 x 127 x 315	40	Round/Oblong	ø20 x t9	ø20 x t6
HPC-2213W	7	1,430W	28.5	523 x 160 x 432	50	Round/Oblong	ø24 x t12 ø22 x t13	ø24 x t9

Catalogue Icons

Throughout the catalogue the following icons are used.



Double Action



Max. hole size in mild steel



Max. hole size in stainless steel



Double Action with multiple-use Dies

Leasing Finance

We can offer leasing as a purchase option on the majority of the products we supply. Thanks to our collaboration with specialist providers we are able to offer very low rates.

Please contact us for an immediate quotation.



Double-Acting Compact Hole Puncher

This battery-operated hole puncher is compact and versatile.

Maximum hole size, 15 mm in 6 mm steel.



HPC-NI56WDF

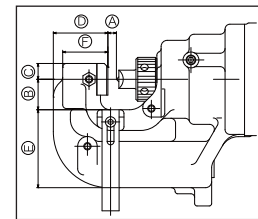
Specification

HPC-NI56WDF

Compact, Battery Powered Hole Puncher

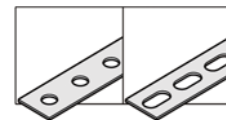
Power	18 V dc Li-ion battery 3.0 Ah Charger 110/230 V ac 75W
Weight	7.9 kg (inc. battery)
Dimensions LxWxH	390 x 115 x 293 mm
Max. throat depth	25 mm
Max. hole size	Mild steel: $\varnothing 15 \times t6$ Stainless: $\varnothing 15 \times t6$
Standard Accessories	12 mm Punch & 12 mm SB Die Carry case & removable handle Adjustment tools Hydraulic oil, Battery Charger 8 mm & 10 mm spanners Hex wrench 3,4 & 6 mm

Throat Dimensions

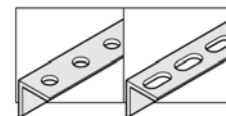


- A:7
- B:25
- C:13
- D:45
- E:64
- F:37 (mm)

Punching Capacity



Flat Bar:
50 x t6
(Centre Punching)



Angle Iron:
Min 25 x 25 x t3
Max 50 x 50 x t6

Punches & Dies

Round Punch & Round Die

Diameter (mm)	4	5	5.5	6	6.5	8	8.5
Round Punch - Part No.	5321000	5321010	5321020	5321030	5321040	5321050	5321060
Round Die A - Part No.	5310500	5310510	5310520	5310530	5312670	5312520	5312540
Thickness for Mild Steel	t2	t2-t3	t2-t3	t2-t4	t2-t6	t2-t6	t2-t6
Thickness for Aluminum & Copper material	t2-t3	t2-t4	t2-t4	t2-t5	t2-t6	t2-t6	t2-t6
Thickness for Stainless Steel	-----	-----	-----	-----	t3-t4	t3-t4	t3-t4

Diameter (mm)	10	11	12	13	14	15
Round Punch - Part No.	5321070	5321080	5321090	5321100	5321110	5321120
Round Die A - Part No.	5312560	5312580	5312600	5312620	5312640	5312660
Thickness for Mild Steel	t2-t6	t2-t8	t2-t8	t2-t8	t2-t8	t2-t8
Thickness for Aluminum & Copper material	t2-t6	t2-t6	t2-t6	t2-t6	t2-t6	t2-t6
Thickness for Stainless Steel	t3-t4	t3-t6	t3-t6	t3-t6	t3-t6	t3-t6

Oblong Punch & Oblong Die

Diameter (mm)	6.5X10	6.5X13	8.5X13	9X13.5	10X15	11X16.5
Oblong Punch - Part No.	5322000	5322010	5322020	5322030	5322040	5322050
Oblong Die B - Part No.	5312010	5312030	5312050	5312090	5312110	5312130
Thickness for Mild Steel	t2-t6	t2-t6	t2-t6	t2-t6	t2-t6	t2-t6
Thickness for Aluminum & Copper material	t3-t6	t3-t6	t3-t6	t3-t6	t3-t6	t3-t6
Thickness for Stainless Steel	t3-t4	t3-t4	t3-t4	t3-t4	t3-t6	t3-t6

Double-Acting Deep Throat Hole Puncher

This hole puncher features a particularly deep throat which allows for more versatile cutting.

Maximum hole size, 18 mm in 6 mm steel.



HPC-NI86W



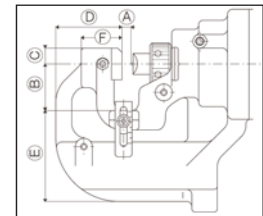
Specification

HPC-NI86W

Deep Throat Hydraulic Hole Puncher

Power	710 W, Single Phase, 110 V/230 V, 50-60 Hz ac
Weight	11.3 kg
Dimensions LxWxH	492 x 127 x 335 mm
Max. throat depth	60 mm
Max. hole size	Mild steel: $\varnothing 18 \times t6$ Stainless steel: $\varnothing 18 \times t4$ or $\varnothing 14 \times t5$
Standard Accessories	12 mm punch, 12 mm Type-B die Carry case Removable handle Adjustment tools Hydraulic oil Work stand 8 mm and 10 mm spanners Hex wrench 3,4,5 and 8 mm

Throat Dimensions



- A: 8.5
- B: 60
- C: 15
- D: 67.5
- E: 92
- F: 38.5 (mm)

Punches & Dies

Round Punch & Round Die

Diameter (mm)	6	6.5	8	8.5	10	11
Round Punch - Part No.	5340040	5340050	5340060	5340070	5340080	5340090
Round Die SB - Part No.	5332510N	5332530N	5332550N	5332570N	5332590N	5332610N
Thickness of Mild Steel	t2-t4	t2-t6	t2-t6	t2-t6	t2-t6	t2-t6
Thickness of Channel (Flange part)	-----	-----	-----	-----	t7.5	t7.5
Thickness of Stainless Steel	t3-t4	t3-t4	t3-t4	t3-t4	t3-t4	t3-t5

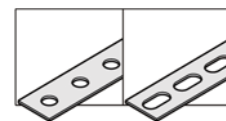
Diameter (mm)	12	13	14	15	16	18
Round Punch - Part No.	5340100	5340110	5340120	5340130	5340140	5340150
Round Die SB - Part No.	5332630N	5332650N	5332670N	5332690N	5332710N	5332730N
Thickness of Mild Steel	t2-t6	t2-t6	t2-t6	t2-t6	t2-t6	t2-t6
Thickness of Channel (Flange part)	t7.5	t7.5	t7.5	t7.5	-----	-----
Thickness of Stainless Steel	t3-t5	t3-t5	t3-t5	t3-t4	t3-t4	t3-t4

Oblong Punch & Oblong Die

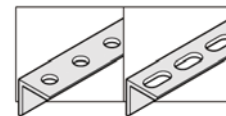
Diameter (mm)	6.5X10	6.5X13	8.5X13	8.5X17	9X13.5	9X18
Oblong Punch - Part No.	5340200	5340210	5340220	5340230	5340240	5340250
Oblong Die B - Part No.	5332010N	5332030N	5332050N	5332070N	5332090N	5332110N
Thickness of Mild Steel	t2-t6	t2-t6	t2-t6	t2-t6	t2-t6	t2-t6
Thickness of Channel (Flange part)	-----	-----	-----	-----	t7.5	t7.5
Thickness of Stainless Steel	t3-t4	t3-t4	t3-t4	t3-t4	t3-t4	t3-t4

Diameter (mm)	10X15	10X20	11X16.5	12X18	13X19.5	14X21
Oblong Punch - Part No.	5340260	5340270	5340280	5340290	5340300	5340310
Oblong Die B - Part No.	5332130N	5332150N	5332170N	5332190N	5332210N	5332230N
Thickness of Mild Steel	t2-t6	t2-t6	t2-t6	t2-t6	t2-t6	t2-t6
Thickness of Channel (Flange part)	t7.5	t7.5	t7.5	t7.5	-----	-----
Thickness of Stainless Steel	t3-t5	t3-t4	t3-t5	t3-t4	-----	-----

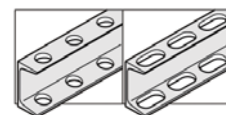
Punching Capacity



Flat Bar:
120 x t6
(Centre Punching)



Angle Iron:
Min 40 x 40 x t3
Max 90 x 90 x t6



Channel:
Min 75 x 40
Max 100 x 50
(Flange Punching)

Double-Acting Hydraulic Hole Puncher

This versatile hole puncher is a good all rounder.

Maximum hole size, 20 mm in 8 mm steel.



HPC-N208W
Mains Powered



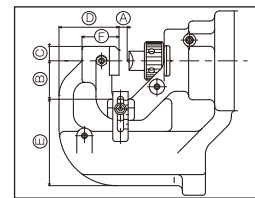
HPC-N208WDF
Battery Powered

Specification HPC-N208W & HPC-N208WDF

Multi-Purpose Hydraulic Hole Puncher
Mains and Battery Powered

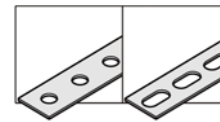
Model	HPC-N208W	HPC-N208WDF
Power	710 W, Single Phase, 110/230 V, 50-60 Hz ac	18 V dc Li-ion battery 3.0 Ah Charger 110/230 V ac 75W
Weight	10.3 kg	10.7 kg (inc. battery)
Dimensions LxWxH	487x127x315 mm	417x127x315 mm
Max. throat depth	40 mm	40 mm
Max. hole size	Mild steel: $\varnothing 20 \times t8$ Stainless: $\varnothing 20 \times t6$	Mild steel: $\varnothing 20 \times t8$ Stainless: $\varnothing 20 \times t6$
Standard Accessories	12 mm Punch & 12 mm SB Die Carry case & removable grip Adjustment tools, Work stand Hydraulic oil 8 mm & 10 mm spanners Hex wrench 3,4,5 & 8 mm	12 mm Punch & 12 mm SB Die Carry case & removable grip Adjustment tools, Hydraulic oil, Battery Charger 8 mm & 10 mm spanners Hex wrench 3,4 & 8 mm

Throat Dimensions

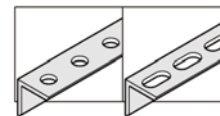


- A: 8.5 (mm)
- B: 40
- C: 15
- D: 62.5
- E: 90
- F: 38.5

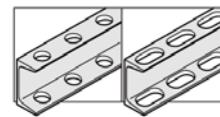
Punching Capacity



- Flat Bar:
80 x t8
(Centre Punching)



- Angle Iron:
Min 40 x 40 x t3
Max 80 x 80 x t8



- Channel:
Min 75 x 40
Max 100 x 50
(Flange Punching)

Punches & Dies

Round Punch & Round Die

Diameter (mm)	6	6.5	8	8.5	10	11	12
Round Punch - Part No.	5340040	5340050	5340060	5340070	5340080	5340090	5340100
Round Die SB - Part No.	5332510N	5332530N	5332550N	5332570N	5332590N	5332610N	5332630N
Thickness for Mild Steel	t2-t4	t2-t6	t2-t6	t2-t6	t2-t6	t2-t8	t2-t8
Thickness for Channel Flange	-----	-----	-----	-----	t7.5	t7.5	t7.5
Thickness for Stainless Steel	t3-t4	t3-t4	t3-t4	t3-t4	t3-t4	t3-t6	t3-t6

Diameter (mm)	13	14	15	16	18	19	20
Round Punch - Part No.	5340110	5340120	5340130	5340140	5340150	5340170	5340160
Round Die SB - Part No.	5332650N	5332670N	5332690N	5332710N	5332730N	5332740N	5352510N
Thickness for Mild Steel	t2-t8	t2-t8	t2-t8	t2-t8	t2-t8	t2-t8	t2-t8
Thickness for Channel Flange	t7.5	t7.5	t7.5	t7.5	t7.5	t7.5	t7.5
Thickness for Stainless Steel	t3-t6	t3-t6	t3-t6	t3-t6	t3-t6	t3-t6	t3-t6

Oblong Punch & Oblong Die

Diameter (mm)	6.5X10	6.5X13	8.5X13	8.5X17	9X13.5	9X18
Oblong Punch - Part No.	5340200	5340210	5340220	5340230	5340240	5340250
Oblong Die B - Part No.	5332010N	5332030N	5332050N	5332070N	5332090N	5332110N
Thickness for Mild Steel	t2-t6	t2-t6	t2-t6	t2-t6	t2-t6	t2-t6
Thickness for Channel Flange	-----	-----	-----	-----	-----	-----
Thickness for Stainless Steel	t3-t4	t3-t4	t3-t4	t3-t4	t3-t4	t3-t4

Diameter (mm)	10X15	10X20	11X16.5	12X18	13X19.5	14X21
Oblong Punch - Part No.	5340260	5340270	5340280	5340290	5340300	5340310
Oblong Die B - Part No.	5332130N	5332150N	5332170N	5332190N	5332210N	5332230N
Thickness for Mild Steel	t2-t8	t2-t8	t2-t8	t2-t8	t2-t8	t2-t8
Thickness for Channel Flange	t7.5	t7.5	t7.5	t7.5	t7.5	t7.5
Thickness for Stainless Steel	t3-t6	t3-t6	t3-t6	t3-t6	t3-t6	t3-t6

Note: Thickness for Channel Flange means the thickness of Flange

Double-Acting Hydraulic Hole Puncher

These are more powerful versions of the HPC-N208W and WDF.

Able to cut 20 mm holes in 9 mm steel.



HPC-N209W

Mains Powered



HPC-N209WDF

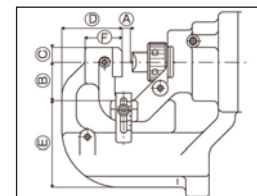
Battery Powered

Specification HPC-N209W & HPC-N209WDF

Multi-Purpose Hydraulic Hole Puncher
Mains and Battery Powered

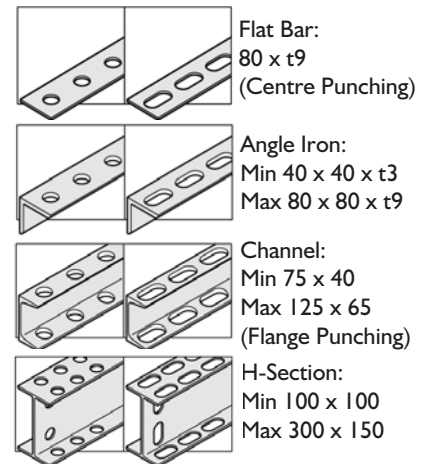
Model	HPC-N209W	HPC-N209WDF
Power	1050 W, Single Phase, 110 /230 V, 50-60 Hz ac	18 V dc Li-ion battery 3.0 Ah Charger 110/230 V ac 75W
Weight	11.3 kg	11.3 kg (inc. battery)
Dimensions LxWxH	529x127x315 mm	430x127x315 mm
Max. throat depth	40 mm	40 mm
Max. hole size	Mild steel: $\varnothing 20 \times t9$ Stainless: $\varnothing 20 \times t6$	Mild steel: $\varnothing 20 \times t9$ Stainless: $\varnothing 20 \times t6$
Standard Accessories	14 mm Punch & 14 mm SB Die Carry case & removable grip Adjustment tools, Work stand Hydraulic oil 8 mm & 10 mm spanners Hex wrench 3,4,5 & 8 mm	14 mm Punch & 14 mm SB Die Carry case & removable grip Adjustment tools Hydraulic oil, Battery Charger 8 mm & 10 mm spanners Hex wrench 3,4 & 8 mm

Throat Dimensions



- A: 10 (mm)
- B: 40
- C: 15
- D: 72.5
- E: 100
- F: 44

Punching Capacity



Punches & Dies

Round Punch & Round Die

Diameter (mm)	6	6.5	8	8.5	10	11	12	13
Round Punch	5340040	5340050	5340060	5340070	5340080	5340090	5340100	5340110
Round Die SB	5332510N	5332530N	5332550N	5332570N	5332590N	5332610N	5332630N	5332650N
Thickness for Mild Steel	t2-t4	t2-t6	t2-t6	t2-t6	t2-t6	t2-t6	t2-t9	t2-t9
Thickness for Channel Flange	-----	-----	-----	-----	t8	t8	t8	t8
Thickness for Stainless Steel	t3-t4	t3-t4	t3-t4	t3-t4	t3-t4	t3-t6	t3-t6	t3-t6
Diameter (mm)	14	15	16	18	19	20		
Round Punch	5340120	5340130	5340140	5340150	5340170	5340160		
Round Die SB	5332670N	5332690N	5332710N	5332730N	5332740N	5332510N		
Thickness for Mild Steel	t2-t9	t2-t9	t2-t9	t2-t9	t2-t9	t2-t9		
Thickness for Channel Flange	t8	t8	t8	t8	t8	t8		
Thickness for Stainless Steel	t3-t6	t3-t6	t3-t6	t3-t6	t3-t6	t3-t6		

Oblong Punch & Oblong Die

Diameter (mm)	6.5X10	6.5X13	8.5X13	8.5X17	9X13.5	9X18	10X15	10X20
Oblong Punch	5340200	5340210	5340220	5340230	5340240	5340250	5340260	5340270
Oblong Die B	5332010N	5332030N	5332050N	5332070N	5332090N	5332110N	5332130N	5332150N
Thickness for Mild Steel	t2-t6	t2-t6	t2-t6	t2-t6	t2-t6	t2-t6	t2-t8	t2-t8
Thickness for Channel Flange	-----	-----	-----	-----	-----	-----	t8	t8
Thickness for Stainless Steel	t3-t4	t3-t4	t3-t4	t3-t4	t3-t4	t3-t4	t3-t6	t3-t6
Diameter (mm)	11X16.5	12X18	13X19.5	14X21				
Oblong Punch	5340280	5340290	5340300	5340310				
Oblong Die B	5332170N	5332190N	5332210N	5332230N				
Thickness for Mild Steel	t2-t9	t2-t9	t2-t9	t2-t9				
Thickness for Channel Flange	t8	t8	t8	t8				
Thickness for Stainless Steel	t3-t6	t3-t6	t3-t6	t3-t6				

Note: Thickness for Channel Flange means the thickness of Flange

Double-Acting Hole Puncher - Mains Powered

This is our most powerful hole puncher.

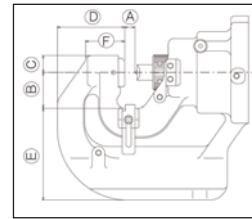
Maximum hole size, 24 mm in 12 mm steel.



HPC-2213W

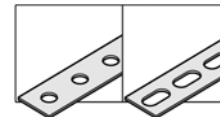
Specification	HPC-2213W
	Double-Acting Hole Puncher - Mains Powered
Power	1,4300 W, Single Phase, 110/230 V, 50-60 Hz ac
Weight	28.5 kg
Dimensions LxWxH	523 x 227 x 463 mm
Max. throat depth	50 mm
Max. hole size	Mild steel: $\varnothing 22 \times t13$ or $\varnothing 24 \times t12$ Stainless steel: $\varnothing 24 \times t9$
Standard Accessories	18 mm punch 18 mm Type-B die Carry case Removable handle Adjustment tools Hydraulic oil Work stand Hex wrench 3,5,6 and 8 mm

Throat Dimensions

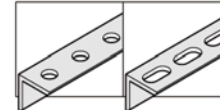


A: 14.5
B: 50
C: 24
D: 95
E: 130
F: 55
(mm)

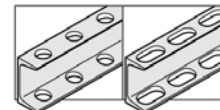
Punching Capacity



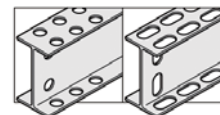
Flat Bar:
100 x t13



Angle Iron:
Min 60 x 60 x t4
Max 100 x 100 x t13



Channel:
Min 125 x 65
Max 300 x 90



H-Section:
Min 125 x 125
Max 450 x 200

Punches & Dies

Round Punch & Round Die

Diameter (mm)	10	11	12	13	14	15
Round Punch - Part No.	5395000	5395010	5395020	5395030	5395040	5395050
Round Die B - Part No.	5380510	5380540	5380570	5380600	5380630	5380670
Thickness of Mild Steel	t2-t9	t2-t9	t2-t10	t2-t10	t2-t13	t2-t13
Thickness of Channel (Flange part)	-----	t8	t8	t8	t13	t13
Thickness of Stainless Steel	t3-t6	t3-t6	t3-t6	t3-t6	t3-t9	t3-t9

Diameter (mm)	16	18	20	22	24
Round Punch - Part No.	5395060	5395070	5395080	5395090	5395100
Round Die B - Part No.	5380710	5380750	5380790	5380830	5380870
Thickness of Mild Steel	t2-t13	t2-t13	t2-t13	t2-t13	t2-t12
Thickness of Channel (Flange part)	t13	t13	t13	t13	t8
Thickness of Stainless Steel	t3-t9	t3-t9	t3-t9	t3-t9	t3-t9

Oblong Punch & Oblong Die

Diameter (mm)	10X15	10X20	11X16.5	12X18
Oblong Punch - Part No.	5395200	5395210	5395220	5395230
Oblong Die B - Part No.	5382010	5382040	5382070	5382100
Thickness of Mild Steel	t2-t9	t2-t9	t2-t9	t2-t10
Thickness of Channel (Flange part)	t8	t8	t8	t8
Thickness of Stainless Steel	t3-t6	t3-t6	t3-t6	t3-t9

Diameter (mm)	13X19.5	14X21	15X21	18X21
Oblong Punch - Part No.	5395240	5395250	5395260	5395270
Oblong Die B - Part No.	5382130	5382160	5382200	5382240
Thickness of Mild Steel	t2-t10	t2-t13	t2-t13	t2-t13
Thickness of Channel (Flange part)	t8	t13	t13	t13
Thickness of Stainless Steel	t3-t9	t3-t9	t3-t9	t3-t9

Battery Powered 20mm Rebar & Threaded Rod Cutter

This versatile cutter maintains thread profile in rebar and stud and allows rebar rod to be flush cut to a surface, with only 2-3mm showing and no burrs. This tool uses specially designed carbide-tipped cuttings discs, which reduce noise, vibration and sparking, and allow up to 20mm rebar and stud to be cut whilst maintaining the profile to allow nuts and couplings to be attached without re-work or thread cleaning.

The cutting disc is fully enclosed to enhance safety and to channel the few sparks that are produced. A jaw ensures minimum movement of the profile whilst cutting - up to 3000 cuts per disc.

The tool uses the most modern and up to date Makita brushless motor technology and rechargeable 5.0 Ah Li-ion battery, which ensures low maintenance and maximum cuts per charge (up to 240 on 10mm bar).



Maintains thread profile in rebar and stud



Rebar rod can be cut flush to a surface, with only 2-3mm showing

HSC-20BL



Specification

HSC-20BL Battery Powered 20mm Rebar & Threaded Rod Cutter

Motor Type	18 V dc
Battery	18 V 5.0 Ah
No. of Cuts (490 N/mm ²) - Per battery charge / blade life:	D10 - 240 / 3000 D12 - 165 / 2500 D16 - 100 / 1400 D20 - 75 / 950
No Load Speed	2,200 rpm
External blade diameter	110 mm
Weight	4.0 kg
Dimensions L x W x H	471 x 137 x 139 mm
Standard Equipment	Battery, Charger 5 mm spanner, Carry case Dust collection bag



Carbide-tipped cuttings discs reduce noise, vibration and sparking



Vimpex Ltd

Star Lane, Great Wakering
Essex SS3 0PJ England
Tel: +44 (0) 1702 216999
Fax: +44 (0) 1702 216699
E-mail: sales@vimpex.co.uk
www.vimpex.co.uk

DS/HPC/ISS 10



Assessed to ISO 9001
Cert/LPCB ref. 456

VIMPEX
Advancing Cutting Technology